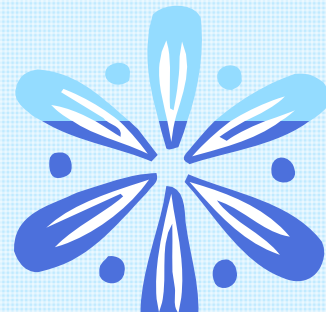


STATEWIDE EARLY CHILDHOOD SPECIAL EDUCATION LEADERSHIP MEETING FRIDAY, FEBRUARY 10, 2012 8:00 AM -4:00 PM

Audience: District personnel who oversee early childhood special education services



COST: \$40

Breakfast, lunch & breaks included

TO REGISTER: *Click on link*
MyQuickReg.com

Holiday Inn Hotel & Convention Center
- Stevens Point -

Group rate ends: Jan 16, 2012

Hotel rooms-
\$70 single occupancy
\$99 double occupancy

Make your reservation:

1. Call hotel directly: 715-344-0200
2. Call reservation hotline: 1-888-HOLIDAY

Please reference CESA 5 or group code: CA5

A G E N D A

- | | |
|------------|--|
| 8:00 a.m. | Breakfast |
| 8:30 a.m. | Welcome |
| 8:50 a.m. | DPI Early Childhood Update |
| 9:30 a.m. | Screening vs. Evaluation |
| 10:00 a.m. | Break |
| 10:10 a.m. | Child Find |
| 10:30 a.m. | Assessment & Dual Language Learners |
| 11:00 a.m. | Early Childhood Resources |
| 11:30 a.m. | Lunch/Posters |
| 12:30 p.m. | Round Table Discussions:
Preschool Environments, Child Out
comes, Early Transitions, Rtl/Wisconsin
Pyramid Model, Screening/Evaluation/
Eligibility, Child Find, Dual Language
Learners |
| 2:15 p.m. | Break |
| 2:25 p.m. | Direction of ECSE in WI |
| 3:30 p.m. | Wrap-Up/Questions |
| 4:00 p.m. | Meeting ends |



Questions? Contact: Erin.Arango-Escalante@dpi.wi.gov